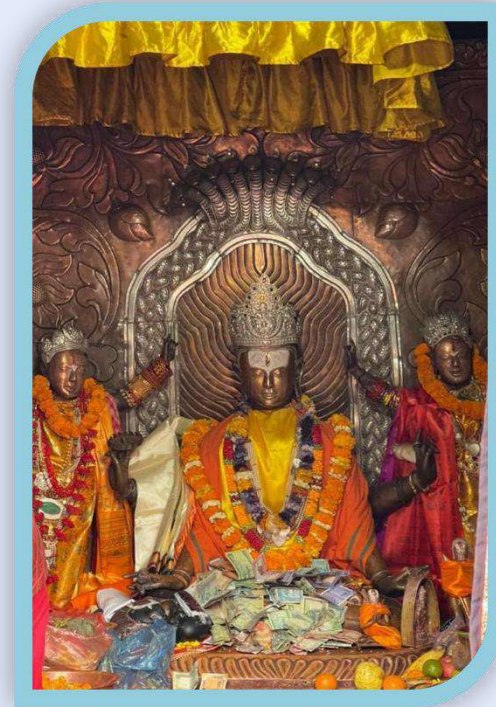


KAILASH MANSAROVAR

YATRA BY HELICOPTER KATHAMDU TO LUKHNOW




Overview

Duration : 11 Days

Package Cost

Price : 2,35,000 Rs per person (by bank
5 % gst extra)



The **Kailash Mansarovar Yatra** is a significant and spiritual pilgrimage to two sacred sites in Tibet: **Mount Kailash** and **Lake Mansarovar**. It holds immense religious importance for Hindus, Buddhists, Jains, and Bonpo followers. Located in the remote and high-altitude regions of the Tibetan Plateau, the yatra is considered one of the most challenging and revered pilgrimages in the world.

Spiritual Significance

Pilgrims believe that visiting Mount Kailash and Lake Mansarovar is a path to spiritual growth, self-purification, and achieving liberation from the cycle of birth and death (samsara).

The **Kailash Parikrama** around the mountain is particularly important, as it is believed that walking around the mountain helps the individual rid themselves of accumulated karmic debt and brings them closer to moksha (freedom from the cycle of life and death).

Itinerary

Day 01: Arrival in Kathmandu

Upon arrival at Kathmandu, you will be greeted at Tribhuvan International Airport and transferred to your hotel. After check-in, you will begin your sightseeing tour, visiting the Pashupatinath Temple (the holiest Hindu temple), Mata Guheswori Temple, and Budhanilkantha Temple (Shesh Shaiya Vishnu, also known as Sleeping Vishnu). Overnight stay at the hotel.

Day 02: Flight From Kathmandu To Nepalgunj

In the afternoon, transfer to the domestic airport for your flight to Nepalgunj, located 400 km southwest of Kathmandu. This major gateway to the far-western regions of Nepal is a one-hour flight. Upon arrival, you will be transferred to your hotel. Evening free for leisure. Overnight stay at the hotel.

Day 03: Flight To Simikot & Overnight Stay

Early in the morning, transfer to Nepalgunj Airport for your flight to Simikot, which takes approximately one hour. The flight passes over Nepal's remote mountain region, which is often cloudy in the later hours, so early morning is ideal for clear skies. Simikot, situated at 2910 meters, is an excellent stop for acclimatization. Simikot's airport only handles small aircraft, such as the Dronier or Twin Otter, which carry 15 passengers at a time. Overnight in Simikot.

Note: Flights to Simikot may be canceled due to weather conditions, in which case you will need to wait until the next available flight.

Day 04: Simikot - Hilsa (By Helicopter) Then Drive To Taklakot (Tibet)

After breakfast, we will take a helicopter from Simikot to Hilsa, a 25-minute flight through remote mountain valleys. The helicopter can carry up to 5 people with 10 kg of luggage per person. Once all passengers have arrived at Hilsa, you will cross the border and drive to Taklakot (Purang) in Tibet. The drive takes about 45 minutes. Overnight stay in Taklakot.

DAY 05: REST IN TAKLAKOT FOR ACCLIMATIZATION

Today, we rest in Taklakot to allow for proper acclimatization. This rest is vital for the circumambulation (Parikrama) around Mount Kailash. Overnight stay in Taklakot.

DAY 06: DRIVE FROM TAKLAKOT TO LAKE MANSAROVAR

After breakfast, we will drive to Lake Manasarovar, located 86 km from Taklakot. Along the way, we will stop briefly for the first view of Mount Kailash from Rakshas Tal. You can participate in the circumambulation (Parikrama) of Lake Manasarovar, and we will stop for a holy dip and perform pooja and hawan. Overnight stay on the western shore of Lake Manasarovar.

DAY 07: DRIVE FROM LAKE MANSAROVAR TO YAMA DWARA & TREK TO DERAPHUK

This is the highlight of the journey, as we begin the sacred circumambulation around Kailash. We drive from Lake Manasarovar to Yama Dwara (Tarboche), a 1.5-hour drive. From here, you will start the trek to Derapuk, a 4- to 5-hour walk (10 km) on relatively flat terrain with mild ascents. Rest stops are important due to the high elevation. Overnight stay in Deraphuk.

DAY 08: TREK FROM DERAPHUK TO ZUTULPHUK

Today, you will trek through a rugged portion of the Kailash Parikrama trail. The trail gradually ascends towards the Dolma La Pass (5600 m), the highest point of the journey. After crossing the pass, the trail descends to the valley floor, passing by Gaurikunda, a sacred pool. The trek to Zuthulpuk is around 21 km, taking 8 to 9 hours. Overnight stay at Zuthulpuk.

DAY 09: END OF TREK, THEN DRIVE BACK TO PURANG/TAKLAKOT

Today, you complete the last leg of your circumambulation by trekking 6 km to the end point (Zongdau). Afterward, you will be driven back to Taklakot. This is a long day, with 3 hours of trekking and 2 hours of driving. Overnight stay in Taklakot.

DAY 10: TAKLAKOT - HILSA - SIMIKOT OPTION STAY

Drive to Hilsa (45 minutes), complete border formalities, and then take a helicopter flight back to Simikot. Overnight stay in Simikot.

DAY 11: FLIGHT FROM SIMIKOT TO NEPALGUNJ, THEN DRIVE TO LUCKNOW

In the morning, fly from Simikot to Nepalgunj (45 minutes), then drive to Lucknow, completing your trip.

Service Includes

1. One night hotel in Nepalgunj, three nights in Kathmandu
2. Two nights in Simikot (basic dormitory) with all meals
3. Necessary arrival/departure transfers in Nepalgunj
4. Nepalgunj-Simikot-Nepalgunj airfare (Twin Otter or Dronier aircraft)
5. Simikot-Hilsa-Simikot helicopter flight (5 persons at a time)
6. Domestic airport taxes, Tibet group visa, travel/trekking permits
7. Guesthouse accommodation in Tibet (except Taklakot)
8. Indian vegetarian meals (breakfast, lunch, and dinner) during the Tibet journey
9. Luxury bus transportation in Tibet, English-speaking Tibetan guide, and tour manager
10. Supporting crew, yaks, and yak men during Parikrama
11. Oxygen for emergencies, first aid kit, and medical support
12. Humla region restricted area permit and royalties
13. Porter cost in Hilsa, taxes, and service charges



Service Excludes

1. Horse riding during Parikrama
2. Travel and emergency rescue insurance
3. Personal expenses, tips for guides/drivers
4. Extra accommodation due to flight cancellations
5. Asthapad darshan (currently prohibited)
6. International airfare

To process your Tibet group visa,

we require,

A clear color scan of your passport and a 25% advance payment, to be submitted at least 60 days in advance.

To Payment Policy



- A booking fee of 500 usd per person is required to be paid in advance to the company.
- The remaining payment must be settled upon your arrival in kathmandu, nepal.

Booking Condition

In accordance with the regulations of the foreign exchange centre, a single permit will be issued for each group. To facilitate this process, we kindly request that you provide the company with a comprehensive list of group members along with clear passport copies a minimum of 8 weeks before your scheduled arrival in kathmandu, nepal. This will ensure the smooth issuance of permits.

In accordance with the regulations of the foreign exchange centre, a single permit will be issued for each group. To facilitate this process, we kindly request that you provide the company with a comprehensive list of group members along with clear passport copies a minimum of 8 weeks before your scheduled arrival in kathmandu, nepal.



This will ensure the smooth issuance of permit the original passport should be valid for minimum 6 months from the date of travel. v upon your arrival in kathmandu, nepal, it is essential to provide us with your original passport for the purpose of processing the group visa application.



To ensure a smooth process,

Please ensure the following: Travel is restricted to the individual for whom the permit has been issued. In the event of cancellation by that individual, the permit cannot be transferred for use by another person. For instance, if gunjan sharma chooses to cancel her yatra and intends for her son pratik sharma to take her place, such substitution is not feasible. Additionally, the cancellation charges will be applicable to the person initiating the cancellation.

Bring along 6 passport-size photographs measuring 33 mm in width and 48 mm in height. For your convenience, you can apply for a 30-day nepal visa in advance through the following link: <https://nepaliport.immigration.gov.np/online> alternatively, you also have the option to obtain an on-arrival visa at the airport.



Cancellation Policy

1. After the Group-Naming list has been submitted for the permit, any cancellations will incur a fee of USD 500 per person. (The permit application is made 60 days prior to the travel date).
2. If the Yatri cancels the tour 45 Days before the date of departure, 75% of total payment will be refunded.
3. If the Yatri cancels the tour 30 Days before the date of departure, 50% of total payment will be refunded.
4. If the Yatri cancels the tour 15 Days before the date of departure, NO payment will be refunded.

Emergency Departure & Associated Costs

In the event of an unforeseen emergency requiring a Yatri to depart the Yatra prematurely and seek to return, the Yatri will be fully responsible for any additional costs incurred due to this early departure. These expenses may include, but are not limited to:

1. Permit and visa cancellations
2. Transportation costs (e.g., return travel)
3. Meals and lodging
4. Medical care
5. Emergency rescue services
6. Any supplementary nights spent on the Nepal side of the journey
7. The Yatri will bear the full financial responsibility for these costs.

Get in Touch



Nidhi Tours and Travels

ISO-9001:2015 CERTIFIED COMPANY

Authorized Agency by FEC- Chinese Government

212 - Abhinav Arcade,
B/H Nalli Showroom
Pritam Nagar - Paldi,
Ashram Road -380006
Ahmedabad, Gujarat, India.



Shailesh Desai :

+91 92271 86184 , 81560 01008



Email :

info@kailashparikrama.com,
nidhitours@gmail.com



Website :

www.kailashparikrama.com,
www.charodham.com

The background is a solid light blue. There are decorative elements in the corners: a large, irregular blue shape in the top right; a smaller, irregular blue shape in the bottom left; a dashed black line in the top left corner; and another dashed black line in the bottom right corner.

Thank You