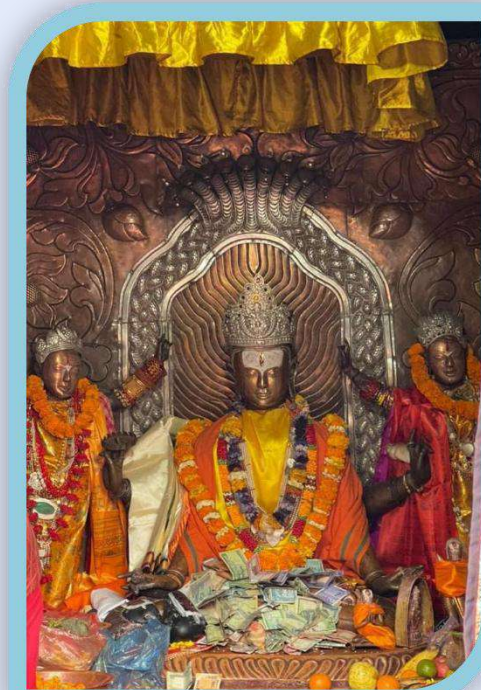




# **KAILASH MANSAROVAR YATRA KATHMANDU BY HELICOPTER**





## **Overview**

**Duration : 10 Days**

## **Package Cost**

**Price : 2,45,000 Rs per person (by bank  
5 % gst extra )**





The **Kailash Mansarovar Yatra** is a significant and spiritual pilgrimage to two sacred sites in Tibet: **Mount Kailash** and **Lake Mansarovar**. It holds immense religious importance for Hindus, Buddhists, Jains, and Bonpo followers. Located in the remote and high-altitude regions of the Tibetan Plateau, the yatra is considered one of the most challenging and revered pilgrimages in the world.

## Spiritual Significance

Pilgrims believe that visiting Mount Kailash and Lake Mansarovar is a path to spiritual growth, self-purification, and achieving liberation from the cycle of birth and death (samsara).

The **Kailash Parikrama** around the mountain is particularly important, as it is believed that walking around the mountain helps the individual rid themselves of accumulated karmic debt and brings them closer to moksha (freedom from the cycle of life and death).



## Itinerary

**Day 01 :** Kathandu airport to hotel pickup by A/C coach

**Day 02 :** Kathmandu temple tour – Kathmandu domestic airport to Nepalgunj by flight

**Day 03 :** Nepalgunj to Simikot flight- Simikot to Hilsa by helicopter- Taklakot by bus

**Day 04 :** Taklakot rest

**Day 05 :** Taklakot to Mansarovar by bus

**Day 06 :** Mansarovar to Darchen to Yamdhar by bus Yamdhar to Dirapuk (1st day parikrama 12 km)

**Day 07 :** Dirapuk to Zuthulpuk (2nd day parikrama 23 km)

**Day 08 :** Zuthulpuk to pic point (3rd day parikrama 5 km) Darchen to Taklakot by bus

**Day 09 :** Taklakot to Hilsa by bus- Hilsa border to Simikot helicopter-Simikot to Nepalgunj by flight-Nepalgunj to Kathmandu by flight

**Day 10 :** Kathmandu end of trip

## Service Includes

1. Accommodation, meal (hotel and guest house)
2. Guest house in Tibet (multibed)
3. Lucknow airport pickup and drop A/C car or bus
4. Kathmandu to Nepalgunj return airfare
5. Nepalgunj to Simikot return air fare
6. Simikot to Hilsa helicopter return fare
7. Simikot permit charge with permit, Chinese group visa
8. Hilsa border to taklakot- kailash- taklakot to hilsa transfer by bus
9. English speaking chinese guide
10. Entry Fees for Ali Area (Kailash Mansarovar)
11. Yak and Yak Man During The Parikrama
12. Nepali Staff Team, Drinking Water for The Entire Journey
13. Oxygen and Medical Kit Bag
14. All Applicable Taxes and Service Charge

## Service Excludes

1. Medical Insurance
2. Tips For Staff
3. Emergency Rescue Services If Required
4. Personal Expenses
5. Horse & porter
6. Drinks & Beverages.
7. Any Additional Expenses That Occurs Due To Natural Calamity And Unforeseen Circumstances
8. Any Service That Is Not Mentioned Above, Terms And Condition Apply\*

## To process your Tibet group visa,

### **we require,**

A clear color scan of your passport and a 25% advance payment, to be submitted at least 60 days in advance.

## To Payment Policy

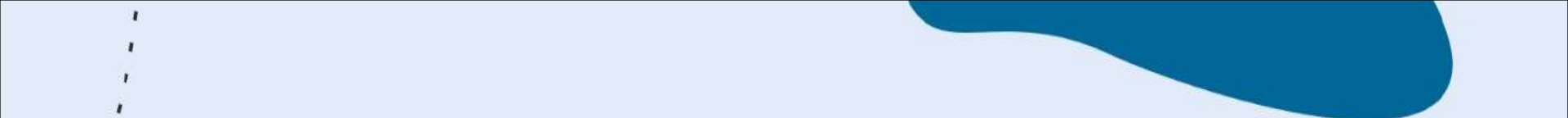
- A booking fee of 500 usd per person is required to be paid in advance to the company.
- The remaining payment must be settled upon your arrival in kathmandu, nepal.

## Booking Condition

In accordance with the regulations of the foreign exchange centre, a single permit will be issued for each group. To facilitate this process, we kindly request that you provide the company with a comprehensive list of group members along with clear passport copies a minimum of 8 weeks before your scheduled arrival in kathmandu, nepal. This will ensure the smooth issuance of permits.

In accordance with the regulations of the foreign exchange centre, a single permit will be issued for each group. To facilitate this process, we kindly request that you provide the company with a comprehensive list of group members along with clear passport copies a minimum of 8 weeks before your scheduled arrival in kathmandu, nepal.


This will ensure the smooth issuance of permit the original passport should be valid for minimum 6 months from the date of travel. v upon your arrival in kathmandu, nepal, it is essential to provide us with your original passport for the purpose of processing the group visa application.



To ensure a smooth process,

Please ensure the following: Travel is restricted to the individual for whom the permit has been issued. In the event of cancellation by that individual, the permit cannot be transferred for use by another person. For instance, if gunjan sharma chooses to cancel her yatra and intends for her son pratik sharma to take her place, such substitution is not feasible. Additionally, the cancellation charges will be applicable to the person initiating the cancellation.

Bring along 6 passport-size photographs measuring 33 mm in width and 48 mm in height. For your convenience, you can apply for a 30-day nepal visa in advance through the following link: <https://nepaliport.immigration.gov.np/online> alternatively, you also have the option to obtain an on-arrival visa at the airport.





## Cancellation Policy

1. After the Group-Naming list has been submitted for the permit, any cancellations will incur a fee of USD 500 per person. (The permit application is made 60 days prior to the travel date).
2. If the Yatri cancels the tour 45 Days before the date of departure, 75% of total payment will be refunded.
3. If the Yatri cancels the tour 30 Days before the date of departure, 50% of total payment will be refunded.
4. If the Yatri cancels the tour 15 Days before the date of departure, NO payment will be refunded.

## Emergency Departure & Associated Costs

In the event of an unforeseen emergency requiring a Yatri to depart the Yatra prematurely and seek to return, the Yatri will be fully responsible for any additional costs incurred due to this early departure. These expenses may include, but are not limited to:

1. Permit and visa cancellations
2. Transportation costs (e.g., return travel)
3. Meals and lodging
4. Medical care
5. Emergency rescue services
6. Any supplementary nights spent on the Nepal side of the journey
7. The Yatri will bear the full financial responsibility for these costs.

## Get in Touch



### **Nidhi Tours and Travels**

ISO-9001:2015 CERTIFIED COMPANY

***Authorized Agency by FEC- Chinese Government***

212 - Abhinav Arcade,  
B/H Nalli Showroom  
Pritam Nagar - Paldi,  
Ashram Road -380006  
Ahmedabad, Gujarat, India.



### **Shailesh Desai :**

+91 92271 86184 , 81560 01008



### **Email :**

[info@kailashparikrama.com](mailto:info@kailashparikrama.com),  
[nidhitours@gmail.com](mailto:nidhitours@gmail.com)



### **Website :**

[www.kailashparikrama.com](http://www.kailashparikrama.com),  
[www.charodham.com](http://www.charodham.com)

The background is a solid light blue. There are decorative elements in the corners: a large, irregular blue shape in the top right; a smaller, irregular blue shape in the bottom left; a dashed black line in the top left corner; and another dashed black line in the bottom right corner.

Thank You